

Project partner: Mediterranean Plant Conservation Unit, Mediterranean Agronomic Institute of Chania

Island

CRETE

Species name (Family)

Chaerophyllum creticum Boiss. & Heldr. (Apiaceae)

Common name

No common names exist for this species.

Plant description

Erect biennial or perennial, sparingly branched, up to 60 cm tall. Leaves triangular in outline, 2- or 3-pinnate. Rays up to 25, 3–5 cm, subequal. Umbellules with up to 15 flowers, but usually only a few developing fruits. Flowers golden yellow. Fruit 13–25 mm, linear-oblong, with low, robust ridges.

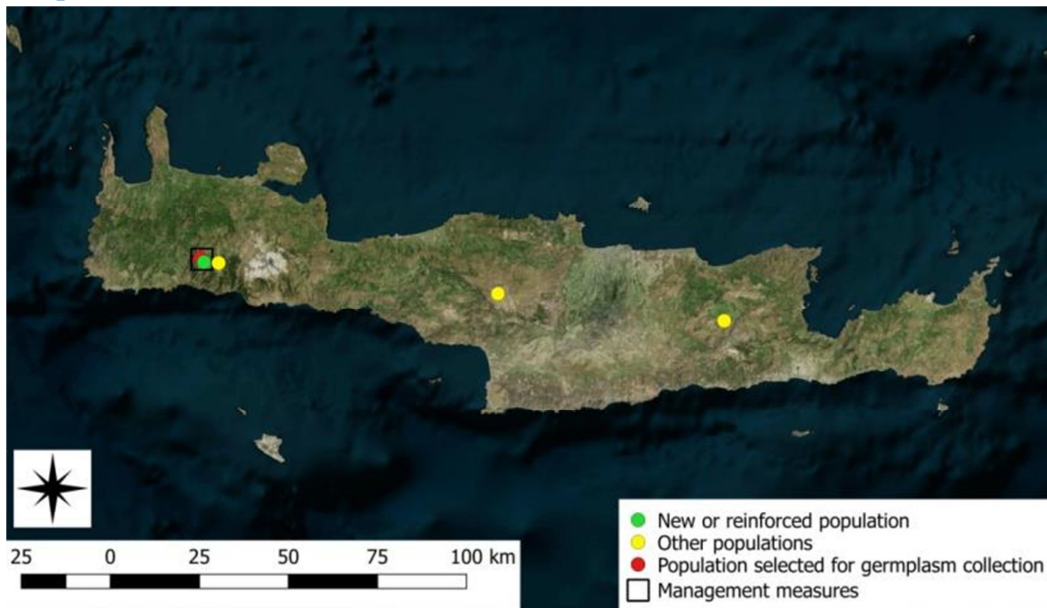
Life form: Hemicryptophyte; flowering: May-June; fruiting: July-August; pollination: by Insects

The habitat of the species is deep clayey soil on limestone, among spiny plants, especially *Berberis cretica* and stony places and openings among *Zelkova abelicea* and *Acer sempervirens* forest, 1000-1500 m.

Distribution

A rare Cretan endemic, according to Strid (2016) known only from a few collections in the three main mountains massifs. Previously it was known only from two localities at the Lefka Ori massif in western Crete, Omalos plateau and a second, higher altitude locality approximately 4 km to the East, at the head of a valley (1450 m).

Map



Legal status

It is protected by the Greek Presidential Decree 67/1981.

Main Threats and conservation status

Threat categories according to IUCN classification scheme, version 3.2:

2.3.1 Nomadic grazing

2.1.3 Agro-industry Farming

The category VU (Vulnerable) is proposed for the species based on (IUCN 2001), meeting the criteria B1a,b (ii,iii,iv,v), c(iv)+2a,b(ii,iii,iv,v),c(iv),C2a(i) and D1+2.

Conservation actions carried out in the CARE-MEDIFLORA project

The actions included both *in situ* and *ex situ* conservation for the population in Omalos plateau.

Seeds stored in the Seed Bank of MAICH (collection 2015) were used for *in situ* conservation, namely the translocation of the population to a nearby public area. Communication actions targeting the local authorities, farmers and shepherds of the area and visitors were also implemented.

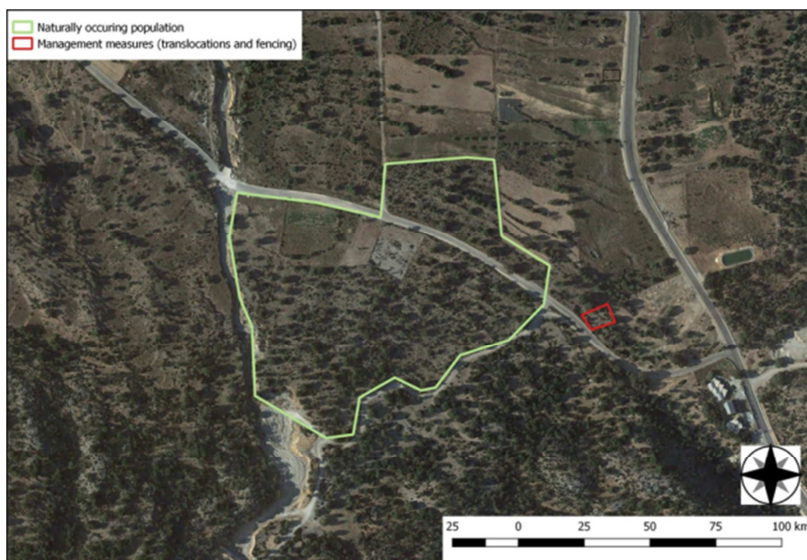
Photos



Chaerophyllum creticum in flowering; *C. creticum* seedlings ready to be planted



Pots planted with *C. creticum* mericarps covered with protective structure; Information sign at the site of the translocation



Distribution of naturally occurring subpopulation of *C. creticum* on Omalos plateau, in West Crete, and translocation area.